

# FARM RETIREMENT

LOCATION: 13649 358th Ave., Ipswich, SD 57451

The farm is located 2.5 miles south of Ipswich, SD on State Hwy 45.

# AUCTION

**FRIDAY, APRIL 20 | 10AM** 2018

**AUCTIONEER'S NOTE:** Major equipment begins selling at 11:00 AM. Live online bidding available on major equipment.

## MFWD TRACTOR

**1980 John Deere 2940**, MFWD, open station,ROPS, 2 hyd., dual PTO, John Deere 260 loader, all hydraulic, 3rd valve, 8' material bucket, 18.4-34 rear tires, 13.6-24 front tires, 7,895 hrs., loader S/N281174, tractor S/N305381

## COMBINE

**2011 John Deere 9870**, STS, premier cab, Contour-Master, RWA, bullet rotor, 5 spd. feeder house, Command center, GreenStar ready, HD final drive, fine cut chopper, Maurer hopper topper, chaff spreader, single pt. hookup, small & large round bar concaves, high capacity lift cylinders, Rice & Cane 520/85R42 duals, Rice & Cane 28L-26 rear tires, 2,707 sep. hrs., 4,015 engine hrs., S/N1RO9870SVA0740385

## CORN HEADS

**2010 John Deere 612 corn head**, 12x30", twin flex shafts, stubble lights, single pt. hookup, S/NCXLA0735739  
**2009 John Deere 612 corn head**, 12x30", twin flex shafts, stubble lights, single pt. hookup, S/NCX730595  
**2003 John Deere 893 corn head**, 8x30", twin flex shafts, stubble lights, single pt. hookup, S/N701357  
**2000 John Deere 1290 corn head**, 12x30", twin flex shafts, stubble lights, single pt. hookup, S/N69567  
**2000 John Deere 1290 corn head**, 12x30", twin flex shafts, stubble lights, single pt. hookup, S/N985673  
**1997 John Deere 893 corn head**, 8x30", twin flex shafts, stubble lights, single pt. hookup, S/N670751  
**1997 John Deere 893 corn head**, 8x30", twin flex shafts, stubble lights, single pt. hookup, S/N670204

## FLEX, PICKUP, & RIGID HEADS

**2016 MacDon F-75D flex draper head**, twin knife, single pt. hookup, end transport, S/N305381  
**2015 MacDon F-75D flex draper head**, twin knife, single pt. hookup, no transport, S/N281174  
**(3) John Deere 914 pickup heads**, 6-belt, single pt. hookup  
**John Deere 930 rigid head**, 30', 12" rows, Lucke sunflower pans, single pt. hookup, S/N661604

## GRAIN CART

**2012 Brent Avalanche 1194 grain cart**, large 1000 PTO, roll tarp, pintle hitch, 520/85R42 duals, S/NB29230126

## CONVENTIONAL TRUCKS

**2006 Peterbilt 379**, 63" standup sleeper, ISX550 Cummins, 13 spd., diff lock, engine brake, 265" WB, 295/75R22.5 tires on aluminum wheels, 749,230 miles, 50,000 miles on drop in remfg. engine w/ paperwork, S/N1XP5D49X66N635350  
**2005 Peterbilt 379**, 63" standup sleeper, ISX550, 13 spd., diff lock, engine brake, 275" WB, 11R22.5 front tires on outside aluminum wheels, 979,099 miles, sleeve piston bearings in 2017 & 15,000 miles on engine job, S/N1XP5D49X95D846417

Registration, terms, & details at [SteffesGroup.com](http://SteffesGroup.com)

## CONVENTIONAL TRUCKS

**2001 Peterbilt 379**, 63" standup sleeper, ext. hood, N-14 Cummins, 525 hp., 13 spd., diff lock, engine brake, American Class interior, 265" WB, 285/75R24.5 tires on aluminum wheels, 1,090,753 miles, S/N1XP5D69X41D520787  
**1999 Peterbilt 379**, 63" standup sleeper, ext. hood, 60 Series Detroit, 600 hp., 13 spd., diff lock, engine brake, 275" WB, 1,109,382 miles, S/N1XP5DR93XD466800  
**1996 Peterbilt 379**, 63" standup sleeper, ext. hood, N14 Cummins, 500 hp., 10 spd., diff lock, engine brake, 285/75R24.5 tires fronts & outside on aluminum wheels, 873,933 miles, S/N1XP5D68X7TN412243  
**2005 Peterbilt 335**, 63" standup sleeper, 4 door, bucket seats, ISX335, Allison automatic, diff lock, engine brake, Schwalbe body flatbed, 5th wheel semi plate, spray-on diamond bed liner, 255/70R22.5 tires on aluminum wheels, 69,927 miles, S/N2NPLHZ6X15M865920

## SERVICE TRUCKS

**2005 Chevrolet Kodiak C5500 service truck**, crew cab, Duramax diesel, Allison automatic, 2WD, Knapheide crane body, IMT jib crane, air compressor, 245/70R19.5 tires on aluminum wheels, dual rear tires, S/N1GBE5E1245F529822  
**1985 Peterbilt 359**, 400 Cat, 13 spd., van body bunkhouse, diff lock, engine brake, rear pintle hitch, 11R24.5 tires on aluminum wheels, 1,325,223 miles, clutch & rear end rebuilt, S/N1XP9DB9X3FD191887  
**1973 Chevrolet CC109 Camper Special service truck**, 4 door, 454 gas, automatic, Knapheide body, S/NCCZ143F415953

## PICKUP, SUVs, & BUS

**2014 Ford F350 Super Duty**, Lariat, FX4 Off Road package, crew cab, long box, bucket seats, 6.7 Power Stroke diesel, automatic, 4WD, leather, running boards, spray-on bed liner, grill guard, headache rack, 5th wheel ball, dual rear tires, 146,872 miles, S/N1FT8W3D0EAA86024  
**2001 Ford Excursion Limited SUV**, V10, gas, automatic, 4WD, 265/75R16 tires, 362,425 miles, engine rebuilt, S/N1FMNU43SX1EC44804  
**2000 Ford Excursion Limited SUV**, V10, gas, automatic, 4WD, 230,150 miles, engine kit, S/N1FMNU43S2YEB17507  
**1992 Motor Coach Industries transit bus**, 47-passenger, Detroit Silver V8 diesel, Allison 4 spd., bathroom, overhead storage, air tag, 315/80R22.5 tires, new exterior & seat covers, engine rebuilt in 2017 with 36,271 miles, S/N1M8GDM9A8NP044494

## HOPPER BOTTOM TRAILERS

**2016 Timpette 4028 Super Hopper hopper bottom**, 40'x78"x102", air ride, roll tarp, stainless steel back & corners, all aluminum, S/N1TDH40028GB152860  
**2016 Timpette 2828 Super Hopper hopper bottom**, 28'x78"x102", air ride, roll tarp, stainless steel back & corners, all aluminum, S/N1TDH28628GB153325

## HOPPER BOTTOM TRAILERS

**2010 Timpette 4028 Super Hopper hopper bottom**, 40'x78"x102", air ride, roll tarp, stainless steel back & corners, all aluminum, S/N1TDH40022AB124396  
**2010 Timpette D2128 hopper bottom**, 21'x78"x102", ag hopper, pup spring, tarp, S/N1TDH21026AB124395  
**2009 Timpette 2828 Super Hopper hopper bottom**, 28'x78"x102", air ride, roll tarp, stainless steel back & corners, all aluminum, S/N1TDH28629AB122334  
**2006 Timpette hopper bottom**, 21'x78"x96", ag hopper, pup spring, tarp, S/N1TDH210216B110105  
**2010 Wilson hopper bottom**, 41'x72"x96", ag hopper, air ride, roll trap, stainless corners & back, 2 row lights, S/N4WWMTFYA85700280

## COMBINE TRAILERS

**2004 King Fisher combine 5th wheel tandem axle trailer**, S/N20042933705A  
**1997 Kent combine trailer**, tri-axle pintle, 22" rubber on steel budds, S/N0718970036  
**1997 Kent combine 5th wheel tri-axle trailer**, 22" rubber on steel budds, S/N0718970037

## HEADER TRAILERS

**2017 Head Hunter tandem axle header trailer**, 43', brakes, front duals  
**2012 Stud King tandem axle header trailer**, 38', brakes, front duals  
**2009 Trail-Tech DR21000 tri-axle pintle hitch header trailer**, 40', 2x wide fold up, 235/85R16 single tires, S/N2CUR492E392025849  
**2008 Befort header trailer**, 40', 2x wide fold up, tri-axle singles, S/N1DHTBM05030821508  
**2002 Jantz header trailer**, 40', 2x wide fold up, tri-axle singles  
**1996 Befort header trailer**, 40', 2x wide fold up, tri-axle singles  
**Unverferth Road Runner tandem axle header trailer**, 35', front duals  
**Maurer tandem torsion axle header trailer**, 41', ball hitch, brakes, front dual tires, 205/75R15 tires

## TRAVEL TRAILERS

**2016 Forest River Salem Hemisphere Lite bumper hitch travel trailer**, 32', sleeps 9, (3) slide outs, electric awning, stainless steel double door refrigerator & microwave, electric fireplace, outside shower, exterior kitchen/bar, electric brakes, S/N4X4TSBG2XGU077787  
**2015 Forest River Hemisphere Lite 5th wheel travel trailer**, 42', sleeps 9, (4) slide outs, electric awning, stainless steel double door refrigerator & microwave, electric fireplace, outside shower, exterior kitchen/bar, electric brakes, S/N4X4FBSBN2XFU075889  
**2012 Forest Glen Work & Play bumper hitch travel trailer**, 35', sleeps 7, slide out, electric awning, queen bed, outside shower, S/N4X4TWPK28CB012256

## OTHER TRAILERS

**2015 Pitts tri-axle trailer**, 53'x102', dove tail, air ride, ramps, rear air plumbed bed, rear 5th wheel plate, sliding ratchets, steel, 235/75R17.5 tires on steel wheels, S/N5JYDF5334FE151455

## OTHER TRAILERS

**2012 Shop-Built tandem axle bumper hitch fuel trailer**, 650 gal. diesel, 40 gal. gas, 2000 watt Honda generator, hose reel, vise, Ingersoll Rand air compressor w/Honda gas engine, 245/75R16 tires, S/N0504064  
**2011 Kaufmann 5th wheel flatbed trailer**, 35'x102", 6' dove tail, ramps, pop-up center, chain box, twin post jack, tandem dual 235/80R16 tires, S/N5SHFH352BB000165  
**2004 Shop-Built tractor/grain cart 5th wheel tri-axle trailer**, 40', 22" steel buds, S/N0380817  
**2001 Mickey service trailer**, 40'x96", oil, fuel, reel, pump, tool chest, torch, welder, water, air compressor, fuel, parts bay, pressure washer, 11R22.5 tires, S/N5CWRA382X1H011277  
**2001 Shop-Built trailer**, 11'x40', S/N360610  
**2000 Shop-Built tandem axle bumper hitch flatbed trailer**, 7'x18', tuck-under ramps

## OTHER EQUIPMENT

Rem GTS 2000 drive over pit grain conveyor, 20', hyd., S/N99-20000-0104  
 1950 Oliver 88 row crop tractor, wide front  
 John Deere loader grapple  
 John Deere bat reel, 30'  
 Head mover, 3 pt.

## SHOP EQUIPMENT

Ingersoll Rand industrial air compressor, John Deere diesel, (2) hose reels, bumper hitch  
 North Star pressure washer, Honda gas engine, electric start, diesel/kerosene heater, on transport  
 Knipco heaters  
 Acetylene torch kit  
 Generator  
 Air reel  
 Porta power  
 Floor jacks  
 Chop saw  
 Tow ropes  
 Saw horses  
 Chain hoist  
 Shop press  
 Dual carrier  
 Pallet racking  
 Iron rack  
 Misc. tools  
 Shop supplies

## PARTS

(4) 800/70R38 dual tires w/extensions  
 2004 Cummins L10 engine, 330 hp., 9 spd., 78,000 miles  
 John Deere wheel weights  
 Concaves  
 Poly snouts  
 Asst. parts  
 Power inverter  
 (2) Semi dolly tandems  
 (4) Semi dolly singles  
 Headache rack, aluminum  
 Chain boxes, aluminum

## MISC. ITEMS

Dimensional iron, to include box iron, I-beam, misc.  
 Propane tank, 500 gal.  
 (2) Propane tanks, 100 lb.  
 Foldup tables  
 Grills



**MAURER BROTHERS**  
**CUSTOM HARVESTING**  
 Greg, 605.380.0610

or Randy Kath at  
 Steffes Group, 320.693.9371  
 or 701.429.8894

Steffes Group, Inc., 24400 MN Hwy 22 S, Litchfield, MN 55355 | 320.693.9371

**SteffesGroup.com**



Ashley Huhn, Randy Kath, Eric Gabrielson, Shelly Weinzettl, Scott Steffes, Brad Olstad, Bob Steffes, Max Steffes

TERMS: All items sold as is where is. Payment of cash or check must be made sale day before removal of items. Statements made auction day take precedence over all advertising. \$35 documentation fee applies to all titled vehicles. Titles will be mailed. Canadian buyers need a bank letter of credit to facilitate border transfer. SD Sales Tax Laws apply.



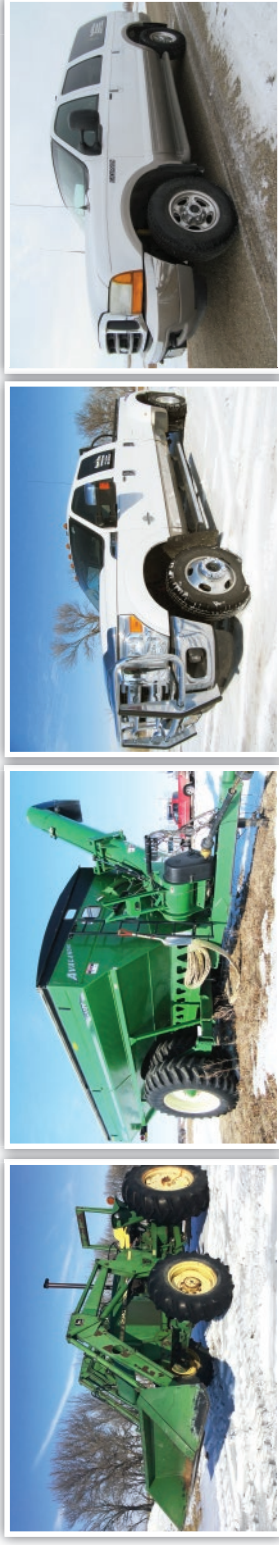


PRESORTED  
FIRST CLASS  
US POSTAGE  
**PAID**  
PERMIT #315  
FARGO, ND



24400 MN Hwy 22 S,  
Litchfield, MN 55355  
SteffesGroup.com

Registration, terms, & details at [SteffesGroup.com](http://SteffesGroup.com)



**FRIDAY, APRIL 20 | 10AM**  
2018

**MAURER BROTHERS CUSTOM  
HARVESTING**  
Greg, 605.380.0610

or Randy Kath at Steffes Group, 320.693.9371 or 701.429.8894

**FARM RETIREMENT  
AUCTION**

**FARM RETIREMENT  
AUCTION**

LOCATION: 13649 358th Ave., Ipswich, SD 57451



Steffes Group, Inc. | 320.693.9371

**SteffesGroup.com**